


VALENTINE'S DAY BINGO

Listen to the clues to find a Valentine's day word. Then, use a dot marker or bingo chip to mark each word as it is called out. If you get four in a row, you win!

			
family	lollipop	Valentine's Day card	balloon
			
box of chocolates	friends	cupcake	locket
			
forget-me-nots	rose	candy heart	envelope
			
teddy bear	bouquet	heart	dove

VALENTINE'S DAY BINGO

Listen to the clues to find a Valentine's day word. Then, use a dot marker or bingo chip to mark each word as it is called out. If you get four in a row, you win!



cupcake



envelope



dove



rose



balloon



Valentine's Day card



bouquet



teddy bear



friends



locket



box of chocolates



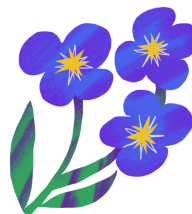
lollipop



candy heart



heart



forget-me-nots



family

VALENTINE'S DAY BINGO

Listen to the clues to find a Valentine's day word. Then, use a dot marker or bingo chip to mark each word as it is called out. If you get four in a row, you win!



bouquet



balloon



Valentine's Day card



locket



teddy bear



envelope



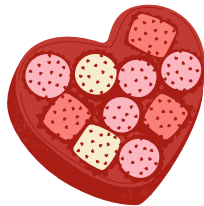
candy heart



cupcake



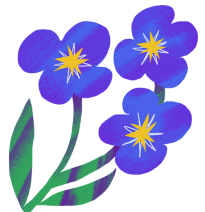
dove



box of chocolates



family



forget-me-nots



friends



heart



rose



lollipop

VALENTINE'S DAY BINGO

Listen to the clues to find a Valentine's day word. Then, use a dot marker or bingo chip to mark each word as it is called out. If you get four in a row, you win!



candy heart



dove



family



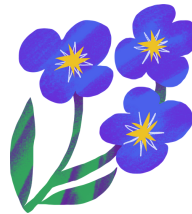
balloon



Valentine's Day card



lollipop



forget-me-nots



friends



rose



bouquet



locket



teddy bear



cupcake



heart



envelope



box of chocolates

VALENTINE'S DAY BINGO

Listen to the clues to find a Valentine's day word. Then, use a dot marker or bingo chip to mark each word as it is called out. If you get four in a row, you win!



teddy bear



rose



Valentine's Day card



friends



cupcake



heart



dove



lollipop



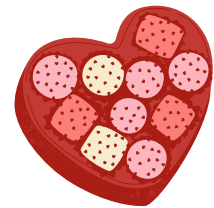
balloon



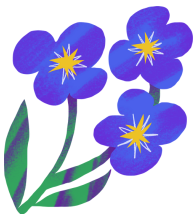
candy heart



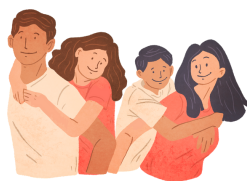
locket



box of chocolates



forget-me-nots



family





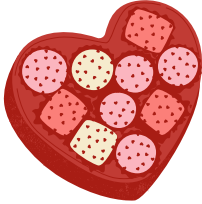




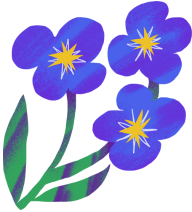








bouquet



envelope

VALENTINE'S DAY BINGO

Listen to the clues to find a Valentine's day word. Then, use a dot marker or bingo chip to mark each word as it is called out. If you get four in a row, you win!

			
family	candy heart	box of chocolates	balloon
			
locket	heart	cupcake	forget-me-nots
			
bouquet	teddy bear	envelope	Valentine's Day card
			
friends	dove	lollipop	rose

VALENTINE'S DAY BINGO

Directions: Cut out the pictures below to use as calling cards.



I am a small, metal case that usually holds a picture. I am carried around on a necklace

I am a locket



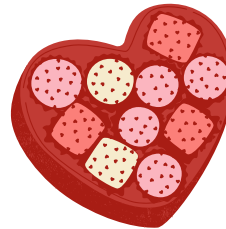
I am a yummy treat topped with icing that you can bring to class and share with your friends.

I am a cupcake



I am a symbol of love and affection on Valentine's day. I am usually the color red.

I am a heart



The chocolates inside me are yummy and come in different flavors, like caramel.

I am a box of chocolates



My flowers are arranged in a pretty way. You can give me to someone as a gift.

I am a bouquet



I am a type of flower that is red, pink, yellow, or white. I can be put into a bouquet.

I am a rose



I am a soft, stuffed animal in the shape of a bear. I am perfect for cuddling.

I am a teddy bear



We are a group of people who are related by birth, marriage, or adoption.

We are a family

VALENTINE'S DAY BINGO

Directions: Cut out the pictures below to use as calling cards.



I am a special type of greeting card you give to your loved one on Valentine's day.

I am a Valentine's Day card



We are not related to you but we have a very strong bond and like and respect each other.

We are friends



I am a small heart-shaped candy that sometimes has messages written on me.

I am a candy heart



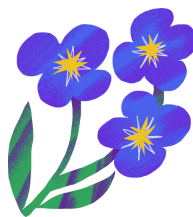
I am made of paper and have a Valentine's day card in me. You can send me in the mail.

I am an envelope



I am a piece of ribbon that is tied into a knot. I have two loops and two loose ends.

I am a bow



I am a blue flower that represents true love. Don't forget to give me to someone you love!

I am a forget-me-not



I am brightly colored and filled with helium. Tie a string to me so I won't fly away.

I am a balloon



I am a white bird that looks like a pigeon. I am a symbol of love, hope, and peace.

I am a dove